



Cachengo Director CD1200

Features

8TB of storage in a 1U, 4-drive
19" EIA rackmount enclosure

Redundant (1+1) power supplies

Dual E5500 CPUs (8 CPU cores)

12 to 96GB of system memory

Run up to 30 virtual servers

Supports CIFS, NFS v3/v4, HTTP, FTP, iSCSI,
file sharing protocols

Flexible IP SAN capabilities with resizable disks
support

Integrated D2D backup with inline deduplication,
compression and Volume Shadow Copy Service
(VSS) support

Designed as a small to medium business server
with built-in server virtualization for server con-
solidation

Up to 250MB/s throughput per server

Easy to use administration

Enabled auto-discovery for simplified client use
& connection

Robust enterprise features yet affordable for
small business, social networking and content
delivery applications

Cachengo Director

Built to protect all of your data from initial creation to
long-term, offsite retention

Cloud Storage That's Grounded™

Cloud Storage is all the rage these days. But as popular as the term is, very few solutions are suitable for true IT deployment because they lack the necessary components.

At Cachengo, we have started with a highly optimized file server appliance, added iSCSI capabilities along with robust Disk-to-Disk (D2D) backup functional-ity. Our basic goal in doing this was to provide the industry's most comprehen-sive data protection scheme at a fraction of the price of competitive solutions.

| | Cachengo CD1200 | HP & VMware vSphere |
|---|-------------------------|--------------------------------------|
| Hyervisor | Included | \$4,778 vSphere Enterprise Plus |
| Server | Included | \$2,819 ProLiant SL1600 G6 |
| 8TB Storage | Included | \$10,619 StorageWorks X1600 12TB |
| Anti-Virus | Included | \$900 Symantec Endpoint |
| D2D Backup | Included | \$36,334 StorageWorks D2D4000 9TB |
| Backup | Included | \$1,399 Backup Exec v12 |
| Online Backup (2TB annual) | \$4,800 | \$19,200 Backup.net |
| Total | \$16,800 | \$76,049 |
| Estimated Setup Time (rest of labor) | 10 minutes (\$1,333) | 48 hours (\$384) |

Incredible Power, Ridiculous Value

The CD1200 series of products features all of the functionality of our entry-level CD100 family of products (File Server, IP SAN, Backup Server and Cloud Backup), but adds incredible virtualization capabilities in a very compact pack-age.

With a Cachengo Director 1200 series appliance, there is no need to purchase separate server and virtualization infrastructure software. Instead, run all of your critical servers and applications right from your storage, where they will have the absolute fastest performance.

Since the CD1200 can reliably backup all of your servers' operating system, ap-plications and data, it makes sense to use it for very fast, virtual server failover. Now, you can literally be up and running in minutes after a server crash, as op-posed to wasting valuable time trying to configure other hardware.

Incredible Security

We began with the most stringent DoD security requirements and built upon them. Beginning with 2048-bit asynchronous encryption keys that are matched to specific hardware fingerprints, and ending with network compartmentalization, our servers and data center storage are unmatched when it comes to securing customer data.

In the event of a network or server breach, our online encrypted file systems are immediately unmounted so that there is no data to actually be compromised, whereas others' solutions are incapable of providing such run-time protection.

D2D Backup

With some of the most advanced D2D capabilities in the industry, all Cachengo Directors are capable of carrying out full or incremental, scheduled backups of Windows, Mac, Linux and Unix servers and desktops. Backup support includes open files support. And with our VSS support, we can even ensure the accurate capturing of transactional data when the database applications support Microsoft's Volume Shadow Copy Service APIs.

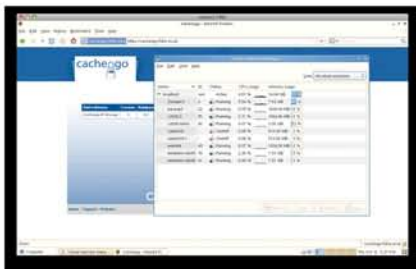
Pay-As-You-Go Online Storage

With Cachengo's Cloud Service (C2S), there are no minimum storage contracts to purchase, and no bandwidth charges to pay for. There is just one, low cost fee for the actual online storage that's consumed.

At just \$0.20/GB per month, C2S is priced as low as some of the cheapest con-sumer solutions, but is capable of providing very fast data recovery thanks to the local caching of data onsite.



CacheGO Storage Manager



CacheGO Virtualization Manager

CD1200 Series Specifications

Technical Specifications

Processors

Dual Intel E5500 Processor, 8 Cores

Memory

12GBBytes DDR3, PC3-10600 ECC Reg. DIMMs expandable to 96GBBytes

Disk Drives

Supports use of SATA disk drives

Supported Drive Capacities

2000GB

System Capacity

8TB

Connectivity

2-GbE LAN Ports on mother board
Optional 4-port GbE card or Dual-port 10GbE card

Data Protection

RAID Level 5

File Compatibility

CIFS, NFS v3/v4, HTTP, FTP, and iSCSI
(block protocols include target/initiator mode)

Operating System

CacheGO Storage OS

Physical Dimensions

Chassis Configuration
1U height , 4 hot swappable drive bays

Chassis Size

1.7"H x 17.2"W x 25.6"D (132mm x 437mm x 650mm)

Weight

45lbs. (20.4kg)

Environmental

Input: 100 - 240V 50-60Hz
Power Supply: 650W redundant (1+1) power supplies
Fans: 4x 4cm hot swappable backplane and system cooling fans

Warranty

1Year on all hardware, no charge software updates for the life of your system

Additional Coverage and Professional Services

Extended Warranty available, as well as CacheGO's Virtual IT for daily administrative assistance. Ask your CacheGO representative for more information.

C
A
C
H
E
N
G
O

I
N
C

For More Information Contact

Sales

sales@cachengo.com

Partners

partners@cachengo.com

Corporate

812 N County Road 31
Berhoud, CO 80513
(970) 344-6043

India

#8-3-944/4, Yellareddyguda
Amperperpet X Road
Hyderabad, India 500073
Phone 91-40-23754735

Web Site:

www.cachengo.com

© Copyright 2009

All Rights Reserved

CacheGO, Inc. reserves the right to change product specifications without notice